

# Flexible Flat Cable

## 0.5/0.8/1.0/1.25/2.54

### ■ MATERIAL

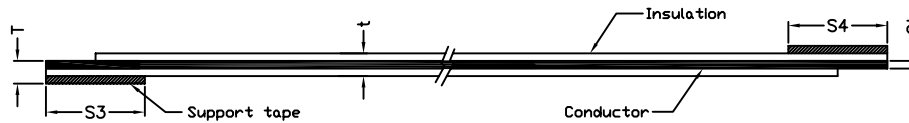
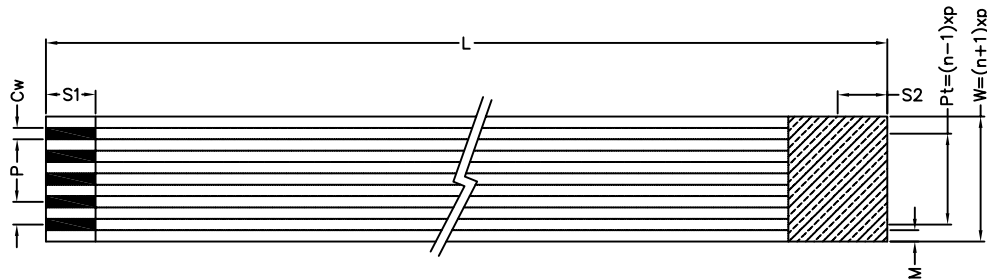
Insulator : Polyester  
 Conductor : Tin plated Copper  
 UL No. : UL 20624 80°C 60V  
 UL 20706 105°C 60V



### ■ SPECIFICATION

Insulation Resistance : 100MΩ Min.  
 Conductor Resistance : 180mΩ Max.

### ■ Detail Dimensions



A		C	
B		D	

### ■ Order Information

Unit: mm

991-x0 - xx xx x x  
 1    2    3    4    5

P	0.5	0.8	1.0	1.25	2.54
Cw	0.3	0.5	0.65	0.8	1.27
Ct	0.035	0.05	0.05	0.1	0.1
T	0.3	0.3	0.3	0.3	0.3
t	0.155	0.17	0.17	0.22	0.22

- |                      |                         |
|----------------------|-------------------------|
| 1. 9: Pitch 2.54mm   | 3. Spec. code           |
| 4: Pitch 1.25mm      | 4. A: Type A            |
| 7: Pitch 1.0mm       | B: Type B               |
| 8: Pitch 0.8mm       | C: Type C               |
| 6: Pitch 0.5mm       | D: Type D               |
| 2. No. of conductors | 5. Pinrex internal code |

\*\*\* Pleaes provide details as below example while send us the inquiry, thanks for your cooperation!

Number	Type	P	Pt	W	M	Cw	Ct	S1	S2	S3	S4	L
20	A	0.5	9.5	10.5	0.35	0.3	0.035	4.0	4.0	8.0	8.0	150